



your **energy expert** in high performance homes

- 3 BEDROOM
- 2.5 BATHROOM
- 1920 SQ.FT LIVING SPACE
- SINGLE GARAGE
- 10 YEAR HOME WARRANTY

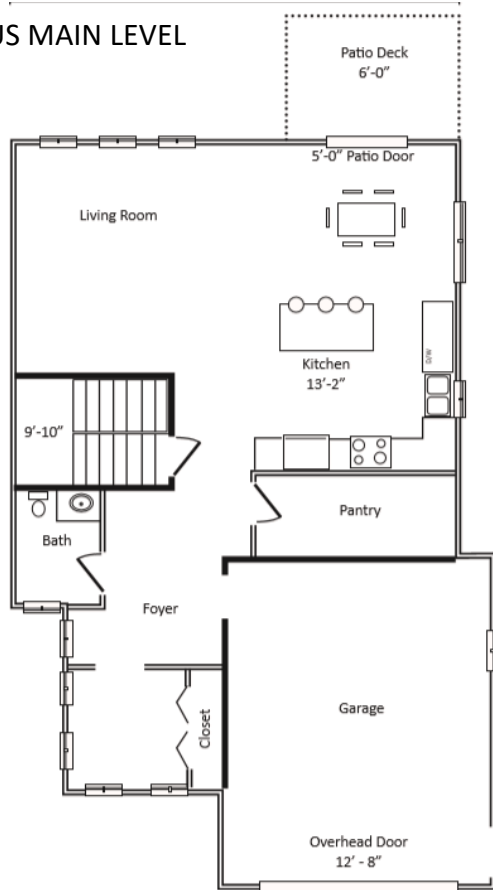
The Brigus
Modern Farmhouse



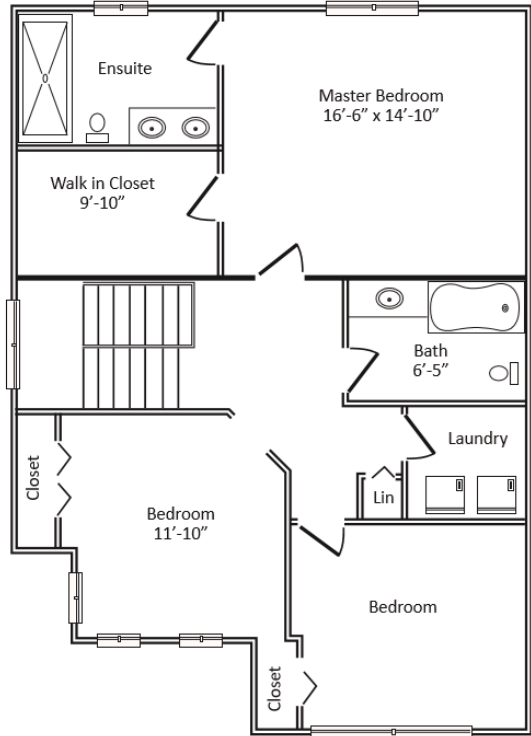


your **energy expert** in high performance homes

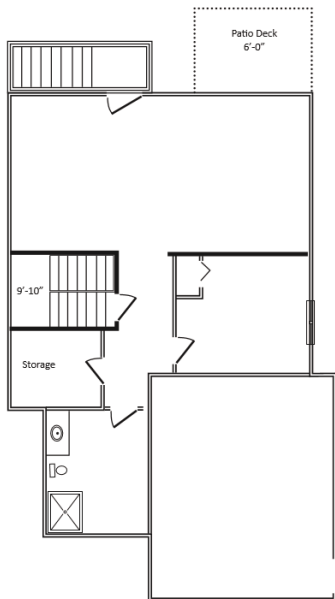
BRIGUS MAIN LEVEL



BRIGUS SECOND LEVEL



BRIGUS LOWER LEVEL



Craig Foley

709.986.1973

craig@eastwoodhomes.ca